

**CIHM
Microfiche
Series
(Monographs)**

**ICMH
Collection de
microfiches
(monographies)**



Canadian Institute for Historical Microreproductions/Institut canadien de microreproductions historiques

© 2000

The
copy
may
the
signi
check



This
Ce d

10x

The copy filmed here has been reproduced thanks to the generosity of:

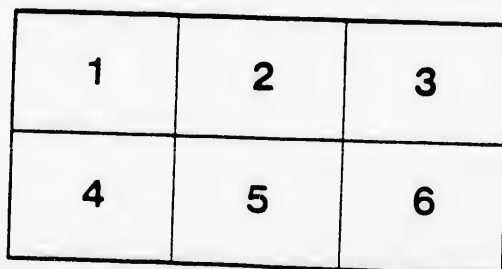
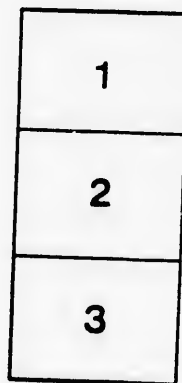
Montreal Museum of Fine Arts
Library

The images appearing here are the best quality possible considering the condition and legibility of the original copy and in keeping with the filming contract specifications.

Original copies in printed paper covers are filmed beginning with the front cover and ending on the last page with a printed or illustrated impression, or the back cover when appropriate. All other original copies are filmed beginning on the first page with a printed or illustrated impression, and ending on the last page with a printed or illustrated impression.

The last recorded frame on each microfiche shall contain the symbol \rightarrow (meaning "CONTINUED"), or the symbol ∇ (meaning "END"), whichever applies.

Maps, plates, charts, etc., may be filmed at different reduction ratios. Those too large to be entirely included in one exposure are filmed beginning in the upper left hand corner, left to right and top to bottom, as many frames as required. The following diagrams illustrate the method:



L'exemplaire filmé fut reproduit grâce à la générosité de:

Musée des Beaux-Arts de Montréal
Bibliothèque

Les images suivantes ont été reproduites avec le plus grand soin, compte tenu de la condition et de la netteté de l'exemplaire filmé, et en conformité avec les conditions du contrat de filmage.

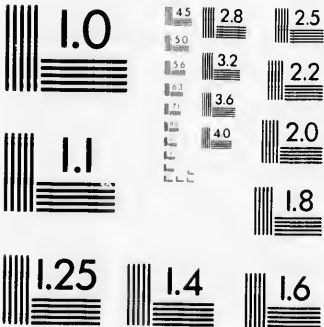
Les exemplaires originaux dont la couverture en papier est imprimée sont filmés en commençant par le premier plat et en terminant soit par la dernière page qui comporte une empreinte d'impression ou d'illustration, soit par le second plat, selon le cas. Tous les autres exemplaires originaux sont filmés en commençant par la première page qui comporte une empreinte d'impression ou d'illustration et en terminant par la dernière page qui comporte une telle empreinte.

Un des symboles suivants apparaître sur la dernière image de chaque microfiche, selon le cas: le symbole \rightarrow signifie "A SUIVRE", le symbole ∇ signifie "FIN".

Les cartes, planches, tableaux, etc., peuvent être filmés à des taux de réduction différents. Lorsque le document est trop grand pour être reproduit en un seul cliché, il est filmé à partir de l'angle supérieur gauche, de gauche à droite, et de haut en bas, en prenant le nombre d'images nécessaire. Les diagrammes suivants illustrent la méthode.

MICROCOPY RESOLUTION TEST CHART

(ANSI and ISO TEST CHART No. 2)



APPLIED IMAGE Inc

1653 East Main Street
Rochester, New York 14609 USA
(716) 482 - 0300 - Phone
(716) 288 - 5989 - Fax



CATALOGUE

of the

Annual Spring Exhibition

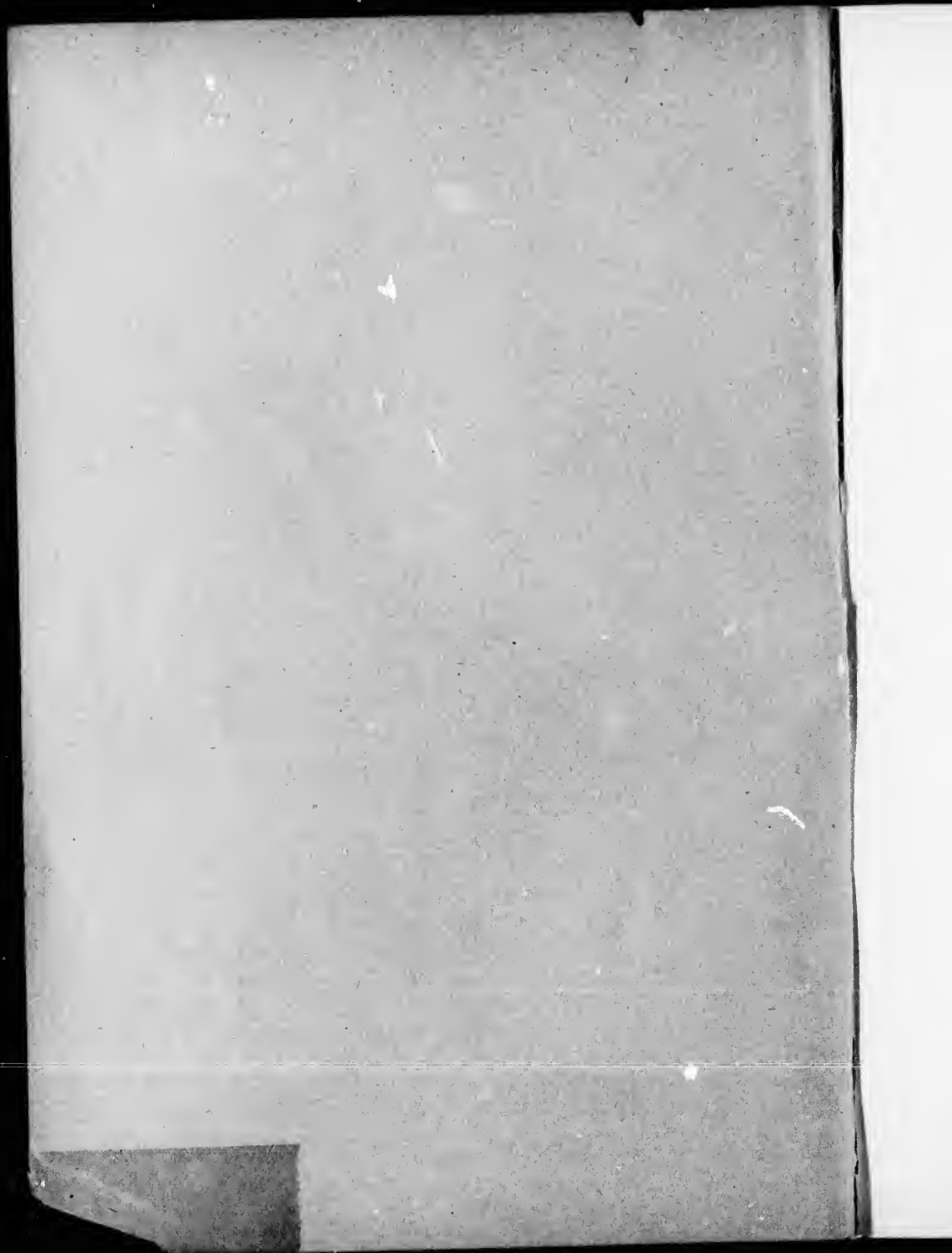
of

Works by Canadian Artists.



◀ April, 1885. ▶





ART ASSOCIATION OF MONTREAL, 1885.

PATRON.

HIS EXCELLENCY THE GOVERNOR-GENERAL—THE MARQUIS OF
LANSDOWNE.

COUNCIL.

President, HON. ROBERT MACKAY.

Vice-President, REV. CANON NORMAN, D.D., D.C.L.

Treasurer, MR. R. W. SHEPHERD.

COUNCILLORS.

For Two Years.

MR. R. R. GRINDLEY.

“ W. G. MURRAY.

HON. DONALD A. SMITH.

MR. A. D. STEELE.

“ D. A. WATT.

“ THOMAS WHITE, M. P.,

For One Year.

MR. F. B. MATTHEWS.

“ HUGH McLENNAN.

“ JOHN POPHAM.

“ J. W. TEMPEST.

“ F. WOLFERSTAN THOMAS.

REV. GEORGE H. WELLS.

STANDING COMMITTEES.

ART GALLERY AND HOUSE.

Hon. Robert Mackay, (chairman); Messrs. Grindley, Popham, Steele, Thomas and Wells (councillors); Messrs. T. Cramp, G. A. Drummond, W. B. Lambe, J. S. McLennan, and A. A. Trotter (members).

LECTURES AND ENTERTAINMENTS.

Rev. Canon Norman (chairman); Messrs. McLennan, Murray, Steele, Tempest, Wells and White (councillors); Messrs. Beers, Doutre, Joseph Gould and Rouer Roy (members).

FINANCE AND BUILDING.

Mr. R. W. Shepherd (chairman); Messrs. Grindley, Matthews, McLennan, Murray, Smith, Tempest and Thomas (councillors).

EDUCATION AND INSTRUCTION.

Mr. Thomas White (chairman); Messrs. Matthews, Popham, Smith, Watt and Canon Norman (councillors); Sir Wm. Dawson, Messrs. N. Bourassa, L. Galarneau, J. H. Joseph, H. Lyman, J. S. McLennan and J. S. McLachlan (members).

INDUSTRIAL AND DECORATIVE ART.

Mr. D. A. Watt (chairman); Messrs. Steele and Thomas (councillors) Mrs. J. H. R. Molson, Mrs. G. W. Stephen, Mrs. Wheeler, Mr. R. Harris and Mr. L. P. Hebert (members).

S. ENGLISH, *Secretary*.



Catalogue.

OIL PAINTINGS.

Pictures marked thus (*) are for sale. Prices with the attendant.

1. *Landscape. - - - - J. W. Gray.
2. *Cabbage. - - - - W. L. Judson.
3. *After the Carnival. - - - - J. Kerr Lawson.
4. *Waiting for the tide. - - - - W. H. Ruel.
5. *A Canadian Valley, near Ancaster. - A. Cox, A.R.C.A.
6. *Mountain Sheep. - - - - G. W. Horlor.
7. * "Grey Dawn." - - - - Henry Bunnett.
8. * "One summer day." - - - - Wm. Brymner.
9. *A Canadian Wood Barge. - - - - R. M. Birks.
10. Portrait. - - - - R. Harris, R.C.A.

11. * "Home, sweet, sweet home." - - Allan Edson, R.C.A.
12. * "An old, old story," - - Maria Brooks, C.L.S.A.
13. *Richmond, Yorkshire. - - E. J. Niemann.
14. *An old Fisherman. - - J. Kerr Lawson.
15. *Comrades. - - R. Harris, R.C.A.
16. *Evening. - - Homer Watson, R.C.A.
17. * "The last in." - - P. F. Woodcock, A.R.C.A.
18. *Lowery weather. - - W. H. Ruel.
19. *Half-way Rock Lighthouse. - - R. M. Birks.
20. *Getting a tow. - - W. H. Ruel.
21. * "Not for you." - - F. Gerald Kinnair.
22. *Forbidden ground. - - P. F. Woodcock, A.R.C.A.
23. Chambly Basin. - - W. P. Scott.
24. *Evening hour. - - J. W. Gray.
25. *Lilies. - - Maria Brooks, C.L.S.A.
26. *The Path through the Woods. - - W. Raphael, R.C.A.
27. *A wreath of flowers. - - Wm. Brymner.
28. *Father's Boat. - - A. Cox, A.R.C.A.
29. Portrait, Mrs. Abbott Brown. - - Maria Brooks, C.L.S.A.
30. *Sympathy. - - R. Harris, R.C.A.

31. * "The anxious moment." - - - Paul Peel, A.R.C.A.
32. *Going to Market. - - - W. L. Judson.
33. *Ready for a Bowl. - - - Maria Brooks, C.L.S.A.
34. *A calm Lake side - - - J. Wilson.
35. *Mount of the Holy Cross. - - J. C. Forbes.
36. A Portrait. - - - John C. Pinhey.
37. *Hot House Grapes. - - - A. N. Henshaw.
38. Portrait, - - - P. F. Woodcock, A.R.C.A.
39. *Edith. - - - Maria Brooks, C.L.S.A.
40. *On the shore of Gaspé Bay. - - R. Harris, R.C.A.
41. *The Trysting Tree, head of Drummond
Street. - - - A. Cox, A.R.C.A.
42. * "The lonely orphans, taken to her heart" Wm. Brymner.
43. *A Muskoka solitude. - - - A. Cox, A.R.C.A.
44. *Flowers. - - - A. N. Henshaw.
45. *Only a bubble. - - - Paul Peel, A.R.C.A.
46. "Far, far away." - - - Maria Brooks, C.L.S.A.
47. *Mount Stephen, on the line of the CPR. J. C. Forbes.
48. Portrait, Rev. Henry Wilkes, DD.,LLD. Maria Brooks, C.L.S.A.
49. *Ready for bed. - - - Maria Brooks, C.L.S.A.

50. * "Winds in the leafless trees complain." J. Wilson.
51. *Abandoned Nest. - - - - P. F. Woodcock, A.R.C.A.
52. Portrait of Mr. T. W. DeWolf. - - A. Boisseau.
53. Portrait, Rev. Abbott Brown. - - Maria Brooks, C.L.S.A.
54. *Down Piccadilly, returning from Cov- Maria Brooks, C.L.S.A.
ent Garden Market. - - -
55. *Returning from the well. - - - P. F. Woodcock, A.R.C.A.
56. *Ready for a tramp. - - - Maria Brooks, C.L.S.A.
57. * "Sound on the Goose." - - - P. Giovanni Wickson.
58. *Hauling the mast. - - - W. Cruikshanks.
59. *Art. - - - E. J. Cobbett.
60. *Twilight. - - - J. Kerr Lawson.
61. *The end of the week. - - - P. Giovanni Wickson.
62. *The Village Forge. - - - J. C. Forbes.
63. Montmorency Falls. - - - W. P. Scott.
64. *A sketch from life. - - - W. Raphael, R.C.A.
65. *Moonlight (winter). - - - B. Olsson.
66. *A friendly race. - - - W. H. Rucl.
67. *Mote Mountain and Ledges, N. Con-
way. - - - B. Champney.

68. Wayfarers. - - - - - Maria Brooks, C.L.S.A.
69. *Village green, Runswick, England. - J. Kerr Lawson.
70. *"Good Bye." - - - - - Paul Peel, A.R.C.A.
71. *Coast view. - - - - - W. E. Norton.
72. *A Headland, Lower St. Lawrence. - J. Wilson.
73. *On the Bay shore. - - - - - J. C. Miles, A.R.C.A.
74. Portrait. - - - - - R. Harris, R.C.A.
75. *Piping Pan. - - - - - J. Kerr Lawson.
76. *Potatoes in bloom. - - - - - W. Raphael, R.C.A.
77. *On Cape Ann coast. - - - - - H. P. Smith.
78. *"Autumn"—Canadian hillside. . - J. Wilson.
79. *The Pond-Locks Mills. - - - - - F. Hawksley.
80. *Working homeward. - - - - - P. F. Woodcock, A.R.C.A.
81. *Peace. - - - - - A. Cox, A.R.C.A.
82. *A poor old man (a study). - - - - - A. Boisseau.
83. *Autumn. - - - - - J. W. Gray.
84. *Christmas on the Welsh Moors. - E. Bill.
85. *Sunlight and Shadow. - - - - - P. F. Woodcock, A.R.C.A.
86. *Italian, selling plaster figures. - - - - - A. Boisseau.
87. *Sunset, Long Lake, Muskoka - - - - - A. Cox, A.R.C.A.

88. *Fishing smack. - - - - R. M. Birks.
89. *Dawn, - - - - A. Cox, A.R.C.A.
90. *On the Banks. - - - - W. H. Ruel.
91. Portrait of Mdle Louise Beaudet. - A. Boisseau.
92. *Twilight, Mount Orford, P. Q. - - A. Cox, A.R.C.A.
93. *A sketch from nature. - - - Allan Edson, R.C.A.

WATER COLORS.

100. *DeKews Falls, near St. Catharines. - L. R. O'Brien, P.R.C.A.
101. *On the Jacques Cartier River. - - D. E. Grant.
102. *Showery weather. - - - - T. Mower Martin, R.C.A.
103. *Evening. - - - - O. Sunnier.
104. *Oxtongue Lake. - - - - T. Mower Martin, R.C.A.
105. *Ojibbawa Indians crossing Nepygon
Lake. - - - - F. A. Verner.
106. *Windsor Castle. - - - - L. R. O'Brien, P.R.C.A.
107. *Alpine Bridge. - - - - C. J. Way, R.C.A.
108. *Lake St. Louis from the Pines, Mt.
Royal. - - - - A. Cox, A.R.C.A.
109. Mount Stephen. - - - - L. Lambe.
110. *A Rainy day on the St. John River. - F. M. Bell Smith, A.R.C.A.
111. *Swiss Mountains. - - - - C. J. Way, R.C.A.
112. Lowery-Day on the New Jersey Coast. H. P. Smith.
113. *Head waters of the Missisquoi. - Allan Edson, R.C.A.
114. *A Gaspé Fishing Station. - - - - L. R. O'Brien, P.R.C.A.

115. Kicking Horse Pass. - - - L. Lambe.
116. *Along the Restigouche. - - - M. Garnett.
- 117 *Grimston, Dorset. - - - F. A. Verner.
118. *A warm day on Mount Washington, F. M. Bell Smith, A.R.C.A.
119. *"In the dumps." - - - K. Harris, R.C.A.
120. *On the Bay shore, St. John. - - F. M. Bell Smith, A.R.C.A.
121. *A freshet on the St. John River. - F. M. Bell Smith, A.R.C.A.
122. *A peep from a Pullman on the Metapedia. M. Garnett.
123. *On Muskoka River. - - - T. Mower Martin, R.C.A.
124. *Hastings, England. - - - G. Harlow White, R.C.A.
125. *The River Wye, England. - - G. Harlow White, R.C.A.
126. *Grand-Mer, St. Maurice. - - L. R. O'Brien, P.R.C.A.
127. *The old Hollyhead Road. - - G. Harlow White, R.C.A.
128. *A Canadian Landscape, A. J. Pell.
- "Find tongues in trees, books in running brooks,
Sermons in stones, and good in every thing."
129. *A River Road. - - - F. M. Bell Smith, A.R.C.A.
130. *Weathering Hartland Point, N. Devon. L. R. O'Brien, P.R.C.A.
131. On Beupre Flats. - - - D. E. Grant.
132. *A Solitude, Mount Desert, Main. - C. J. Way, R.C.A.
133. Sunshine. - - - O. Sunnier.

134. Street Scenes. Louvain, Belgium. - A. T. Taylor.
135. *Old Farm Yard. - - - - O. Sunnier.
136. *Fog clearing, Bay of Fundy. - - F. M. Bell Smith, A.R.C.A.
137. *A cottage home of Canada. - - A. Cox, A.R.C.A.
138. *Voyageurs on the St. Maurice. - - L. R. O'Brien, P.R.C.A.
139. *Mount St. Anne, P. Q. - - - D. E. Grant.
140. *Fisherman's Quarters (Hastings). - G. Harlow White, R.C.A.
141. A bit of nature. - - - - D. E. Grant.
142. *Early morning in Bideford Bay, N.
Devon. - - - - L. R. O'Brien, P.R.C.A.
143. *A Rocky Bed. - - - - F. A. Verner.
144. *The Gleaner. - - - - Wyatt Eaton.
145. *A Misty Morning. - - - - O. Sunnier.
146. Falls of Feréol. - - - - D. E. Grant.
147. *Wigwams on Nepygon River. - - F. A. Verner.
148. *Ravine at Waterdown. - - - T. Mower Martin, R.C.A.
149. *The Thames at Ousley. - - - L. R. O'Brien, P.R.C.A.
150. *A tributary of the St. Maurice. - L. R. O'Brien, P.R.C.A.
151. View in Perugia, Italy. - - - A. T. Taylor.

ETCHINGS.

152. *Indian Summer (Georgian Bay.) - T. M. Martin, R.C.A.
153. *Upper Muskoka. - - - T. M. Martin, R.C.A.
154. *The Settler's Home. - - - T. M. Martin, R.C.A.
155. *Belvidere, Central Park, N.Y. - - T. M. Martin, R.C.A.
156. *Evening. Central Park, N.Y. - - T. M. Martin, R.C.A.
-

ARCHITECTURAL DRAWINGS.

157. Semi-detached Residences. - - - And. T. Taylor.
158. Terrace Houses. - - - - - And. T. Taylor.
-

STAINED GLASS.

- . Design for Hall Window. - - - Castle & Son, Montreal.
. Memorial Window (St. John.) - - - Castle & Son, Montreal.
. Memorial Window (Disputation in the
Temple). - - - - - J. C. Spence & Sons.
Placed in the Entrance Hall.

A.
A.
A.
A.
A.

ontreal.
ontreal.

Sons.

Spring Exhibition

1885.

